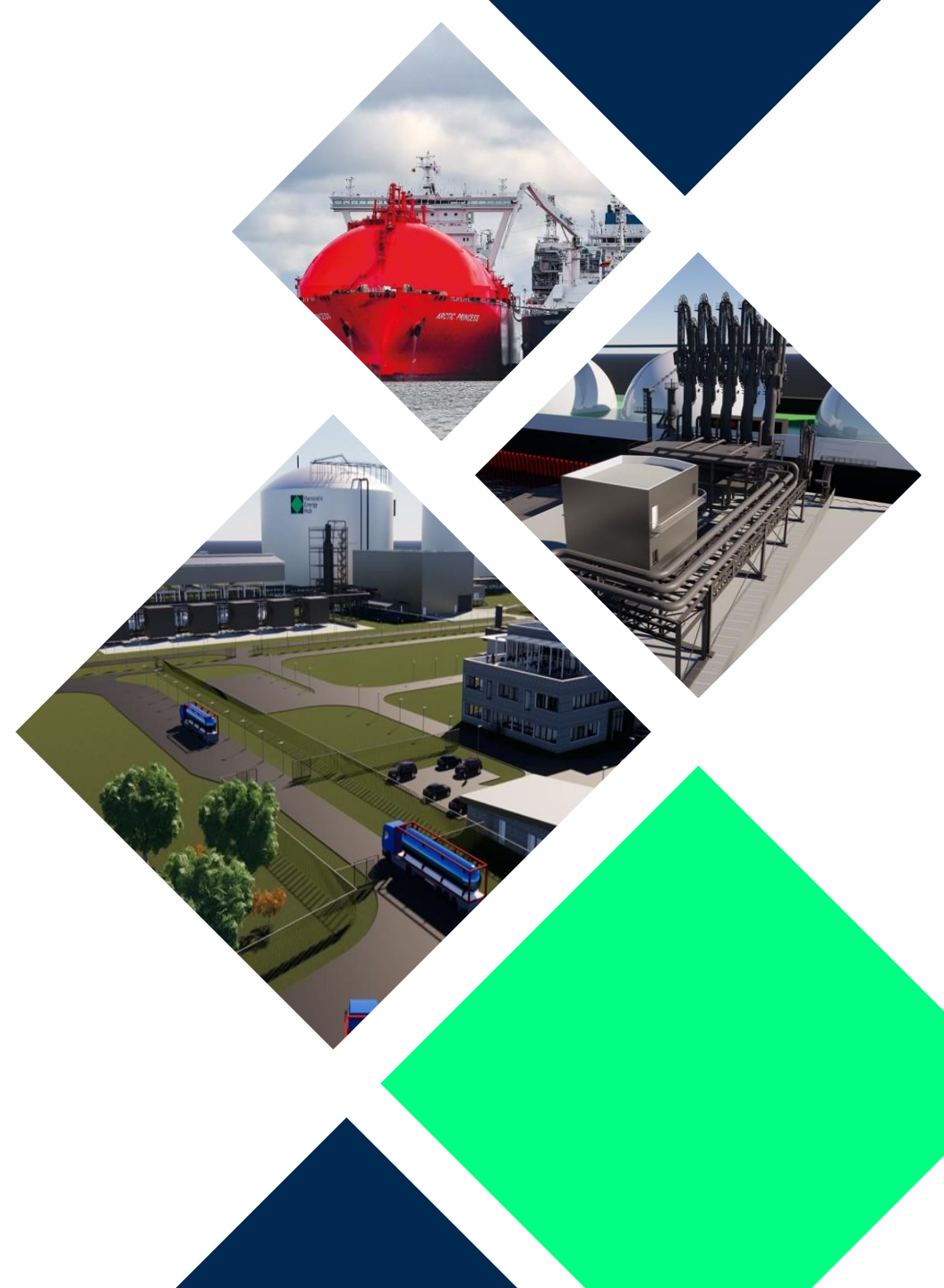


Hanseatic
Energy
Hub

Hanseatic Energy Hub

A future-flexible modular system for the green energy transition

July 2023



Welcome to Stade!



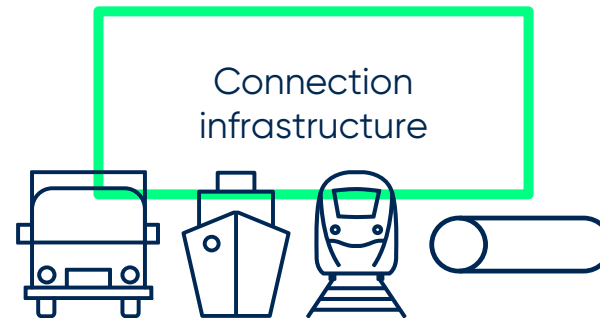
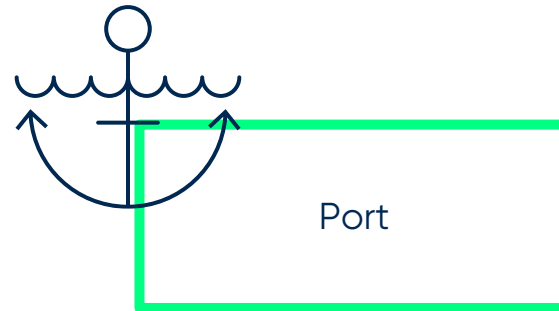
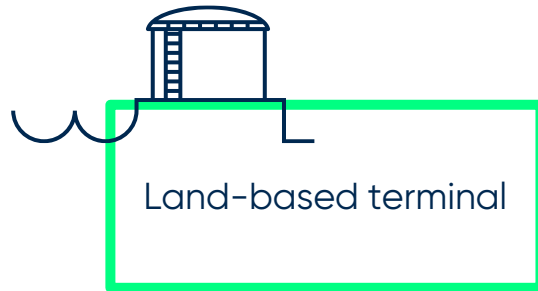
Hanseatic Energy is an import terminal that secures Germany's supply of LNG and green gases while preparing for the market ramp-up of hydrogen.





We're future-flexible!

The terminal, port, industrial park and connecting infrastructure are designed so that the conversion to hydrogen can be carried out in a modular fashion analogue to building block systems.



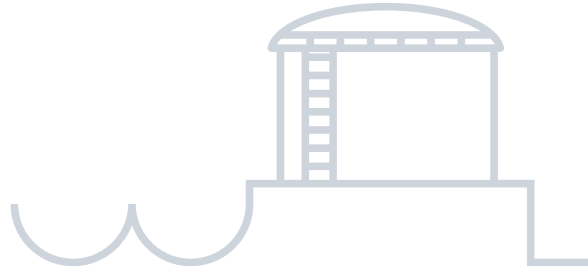
Technical and commercial flexibility



MODULE: LAND-BASED TERMINAL

Zero-emission terminal

- Commissioning 2027
- First expansion stage for LNG, Bio-LNG and SNG
- Up to 13.3 bcm/a capacity for LNG and a peak capacity of 21.7 GW



Ammonia-ready

- Material selected for tanks and pipelines considers later uses by ammonia
- Foundations statically inspected
- Commercial long-term contracts with option for ammonia
- Possible to ramp up ammonia in parallel thanks to smaller tanks



Securing energy supplies in the short term

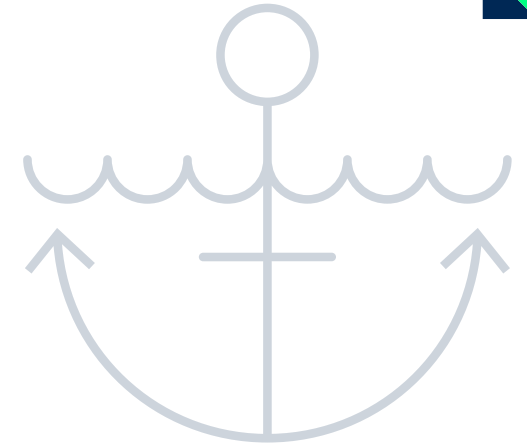
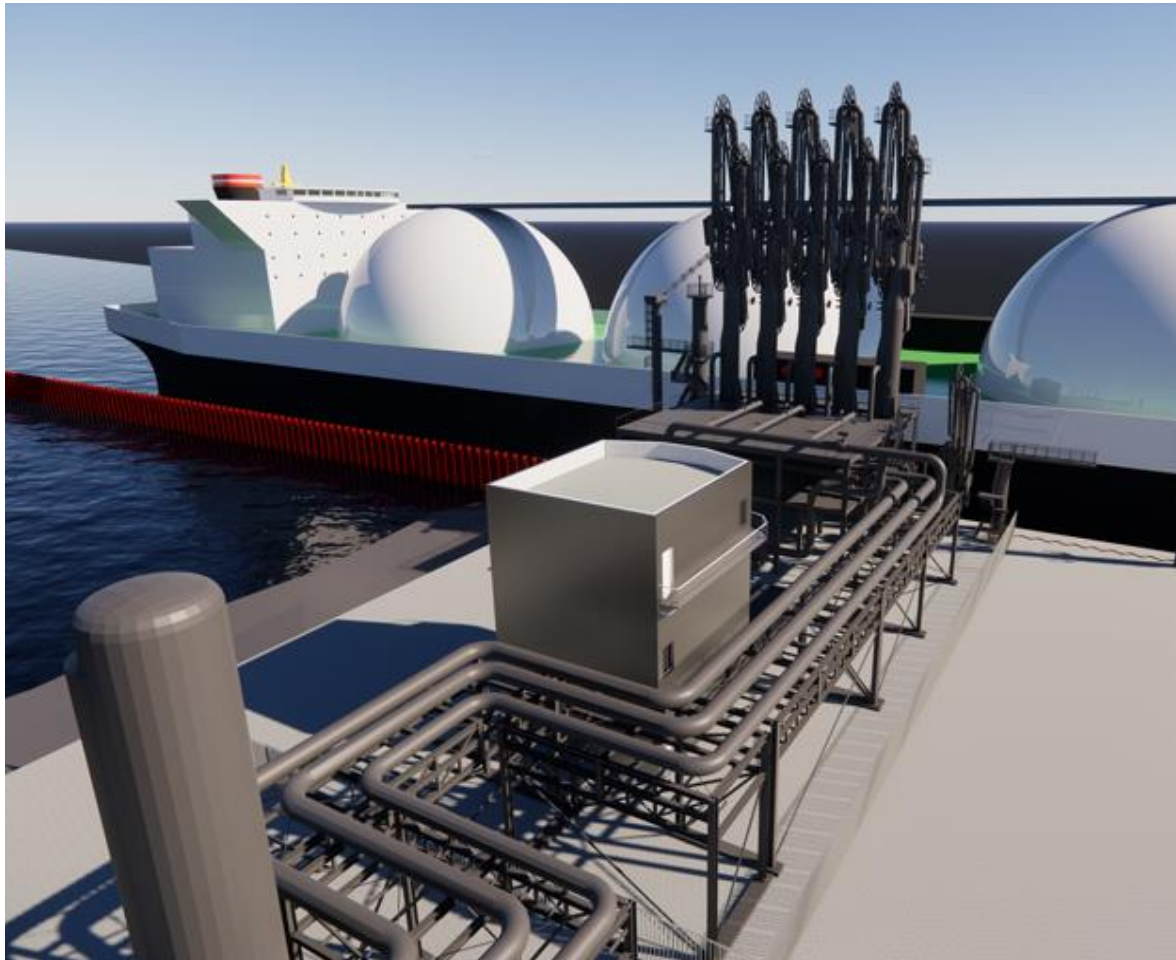
TEMPORARY MODULE: FSRU



- "Transgas Force" from Dynagas, 7,5 bcm/a
- From end of 2023 until the land-based terminal is commissioned
- Utilizes the already existing infrastructure
- Connection via a very short connecting pipeline
- Nautically simulated and fully suitable
- Not H2-compatible

Modern energy port for liquefied gases

MODULE: PORT



- Completion 2023
- Large jetty allows tankers up to Q-Max size
- Small jetty for bunker ships
- Parallel use for LNG & ammonia possible
- Nautical simulation successfully completed

Enabling the energy transition and industrial transformation



MODULE: INDUSTRIAL PARK



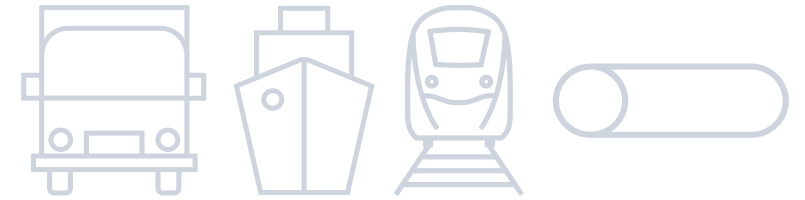
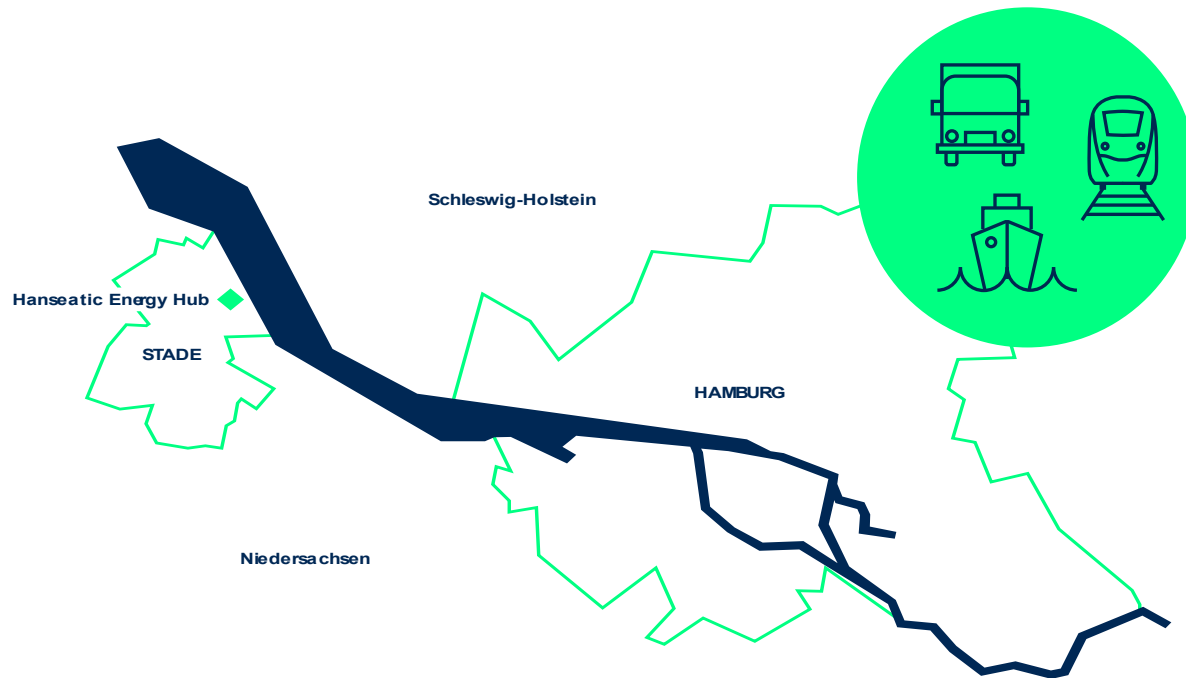
- Existing industrial and port location with considerable demand for energy and raw materials
- Dow a leader in Germany in the production and use of electrolysis hydrogen
- Over 50 years of on-site expertise in handling liquefied gases
- Potential sites for ammonia crackers
- Green offshore power: 380kV grid connection



Multimodal connection of gas and hydrogen



MODULE: CONNECTION INFRASTRUCTURE



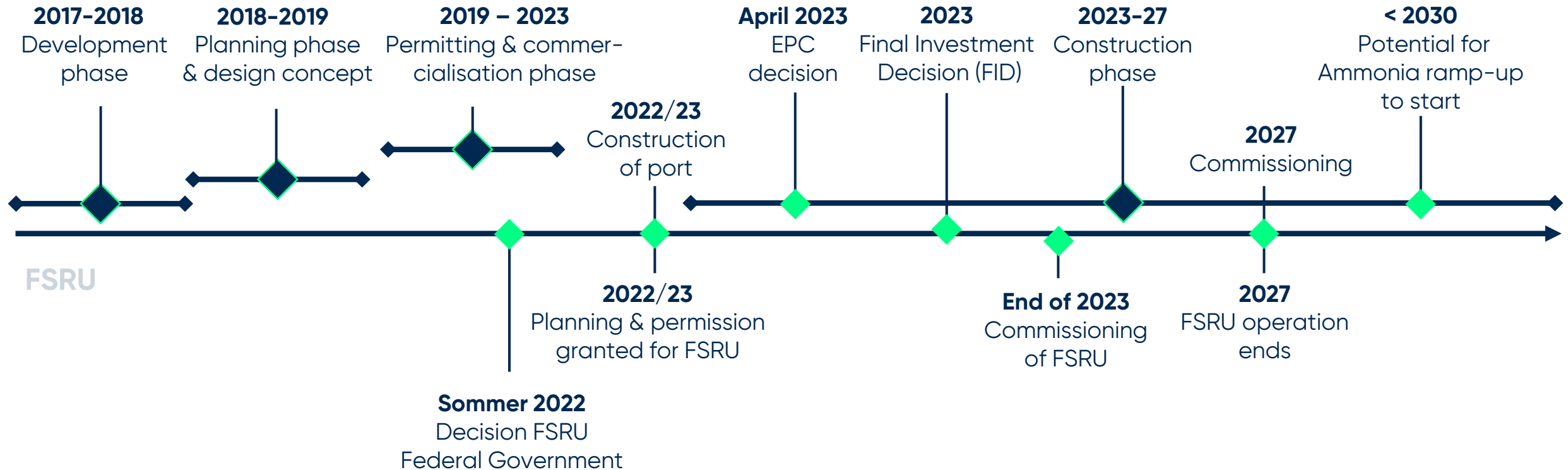
- Short distance to the German gas transport network, with connection to large-scale consumers
- Proximity to Hamburg port means ideal location for bunkering services.
- Also offered: truck- & rail-loading
- The European hydrogen network (H2 backbone) is being built in the immediate vicinity

Clear course for supply security



Timeline

Land-based Terminal



Partners with experience and perspective

Strong and complementary group of shareholders



▶ **Financing Partner:** Partners Group, a leading global private markets firm with \$127 billion in managed assets, acting on behalf of its clients.



▶ **Industrial Partner:** Enagás is Spain's TSO and Technical Manager of the Spanish gas system, with 50 years' experience in the development, operation and maintenance of energy infrastructures. It has more than 12,000 kilometres of gas pipelines, three strategic storage facilities, eight regasification plants.



▶ **Regional Partner:** Buss Group, the initiator of the project, is a group of companies from northern Germany with a focus on maritime services, shipping, ship and container financing as well as port and logistics services.



▶ **Local Partner:** Dow, one of the leading global chemical companies, has been an early partner and neighbor of the Hanseatic Energy Hub. In addition to the strategically good location on the Dow site in Stade and the existing infrastructure, the Hanseatic Energy Hub benefits from the comprehensive know-how: Dow has more than 50 years of experience in handling liquefied gases in Stade and is a leader in Germany in the extraction and use of hydrogen.



Hanseatic
Energy
Hub

Thank you

for your attention

